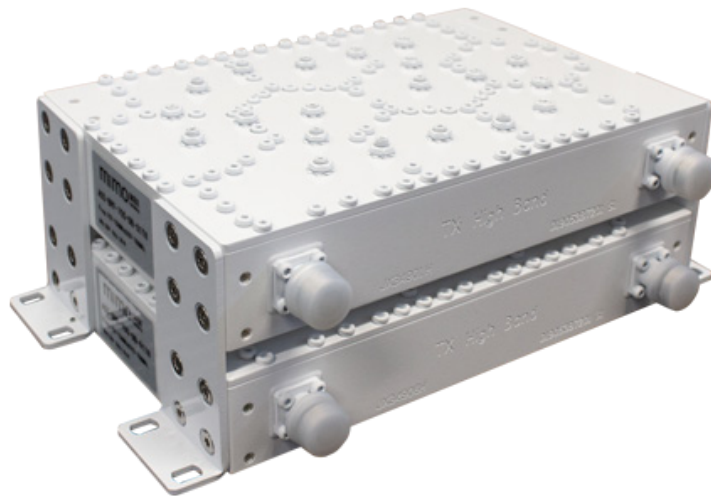


## 700MHZ DUAL CAVITY FILTER - TX HIGH

### Spec Sheet

---



These filters are designed to allow Mimomax RRU-T and BRU-T to coexist in very close proximity to adjacent-band cellular services (such as Verizon and FirstNet), without suffering interference.

The filters are intended to be fitted in each of the antenna feedlines of either the RRU-T or BRU-T as required.

Each path through the filter consists of a parallel pair of very sharp filters intended to pass the Mimomax signals while rejecting the cellular signals on either side.

There are two variants of the filter, one optimised for the use at radio with Tx high locations and one optimised for radio with Tx low locations.

#### Key Features:

- Low Insertion Loss
- High Integration
- High Reliability

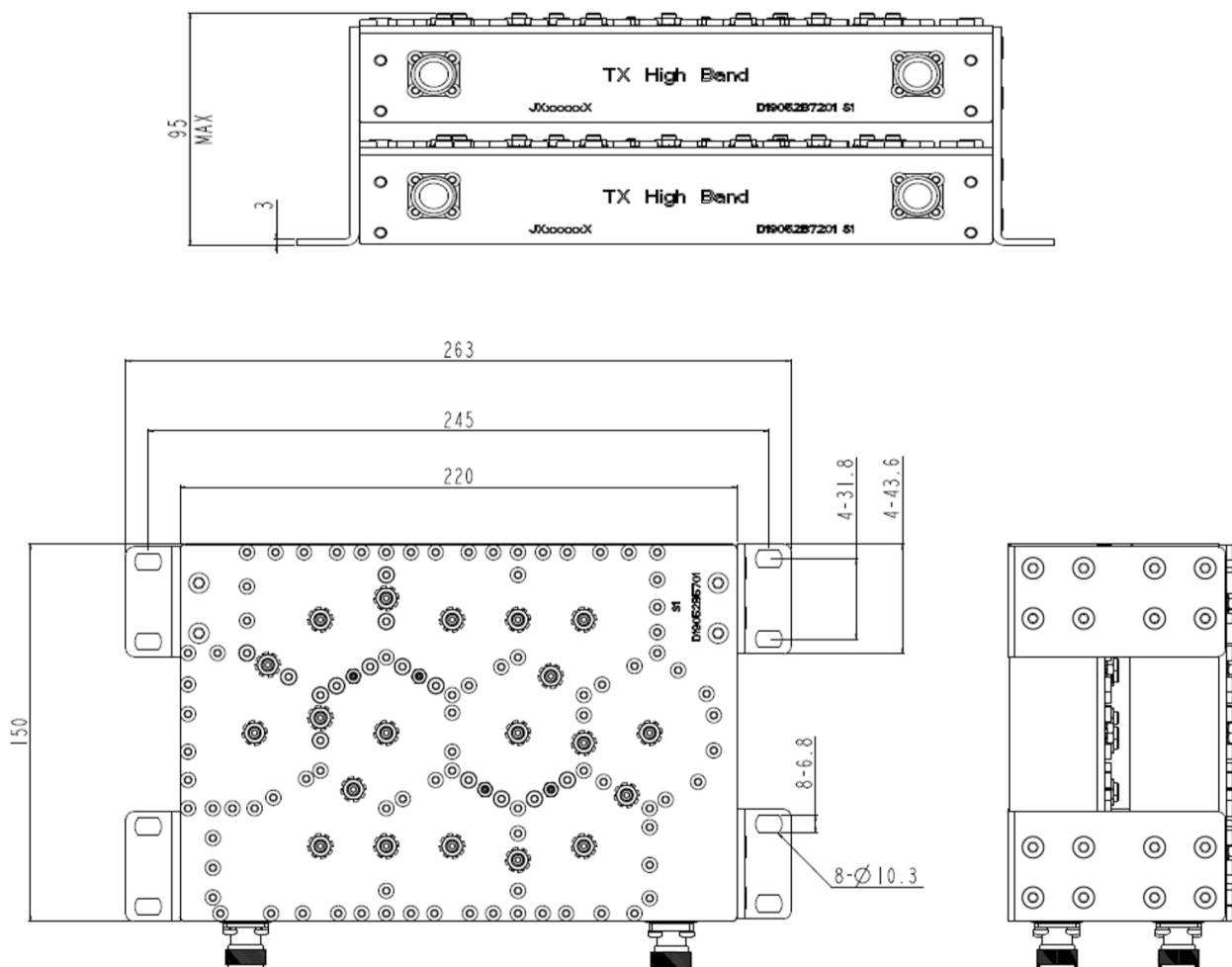


Figure 1 Wall mount configuration

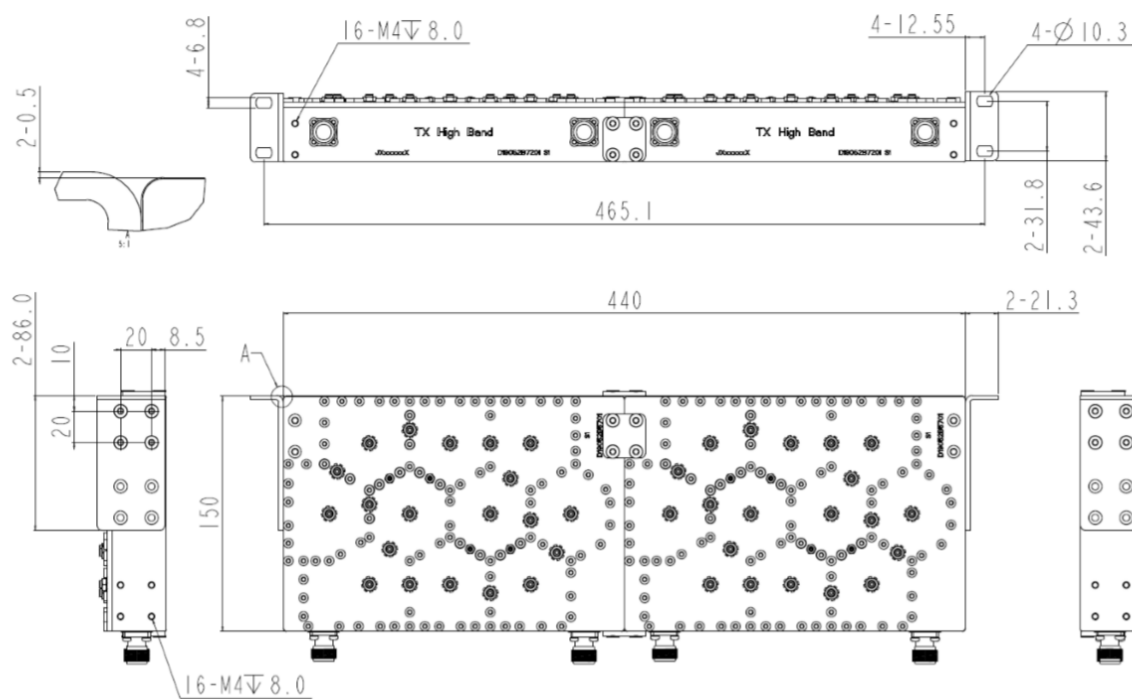


Figure 2 Rack mount configuration

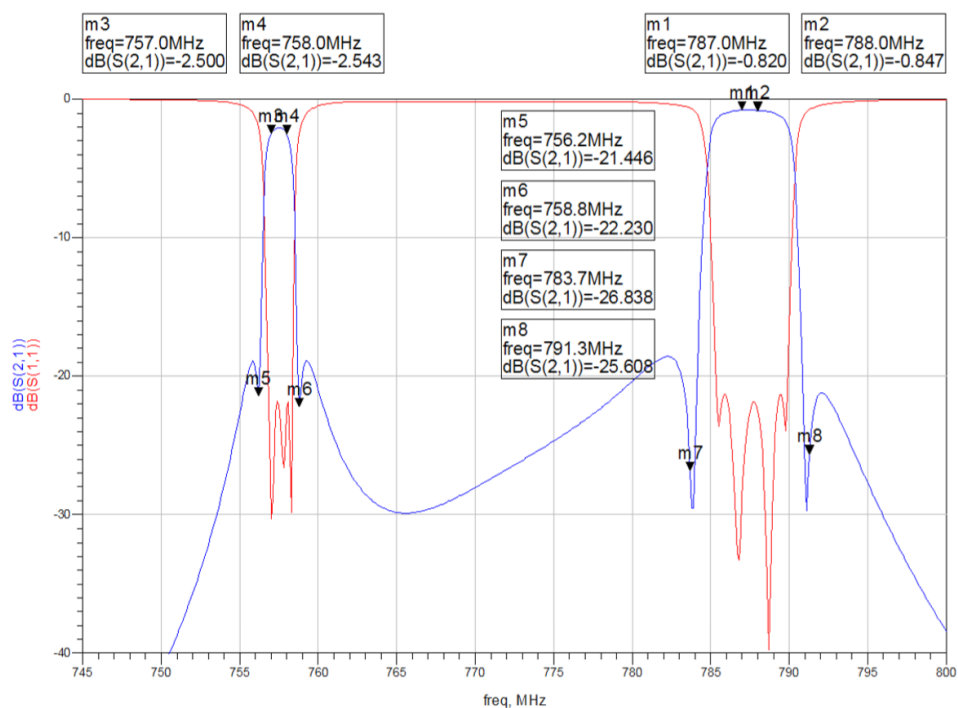
# 700MHZ DUAL CAVITY FILTER - TX HIGH SPECIFICATIONS

| Electrical Specifications                   |                                 |                           |
|---|---------------------------------|---------------------------|
| Parameter                                   | Tx High                         |                           |
| Frequency Range                             | 757-758 MHz                     | 787-788 MHz               |
| Return Loss                                 | ≥ 15 dB                         | ≥ 15 dB                   |
| Insertion Loss (+77°F/+25°C)                | ≤ 3.0 dB                        | ≤ 1.0 dB                  |
| Insertion Loss (-4°F/-20°C to +158°F/+70°C) | ≤ 4.5 dB                        | ≤ 1.1 dB                  |
| Rejection                                   | ≥ 15 dB @ 757.5MHz ± 1.5MHz     | ≥ 15 dB @ 787.5MHz ± 4MHz |
| Power Handling                              | 5 Watts (37dBm)                 |                           |
| Temperature Range                           | -4°F to +158°F (-20°C to +70°C) |                           |

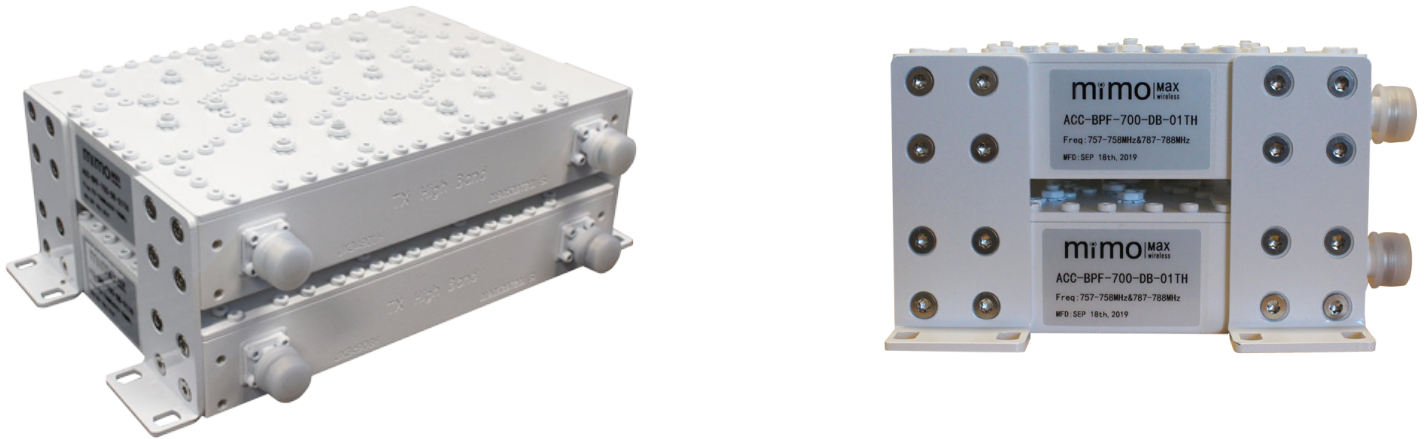
| Mechanical Specifications |  |
|---------------------------|--|
| Dimension (L x W x H)     | Rack mount: 440 x 150 x 43.6 mm<br>Wall mount: 263 x 150 x 95 mm |
| Port Connectors           | N-Female   |
| Finish                    | White  |
| Mounting                  | Wall mount and 19" Rack mount                                    |
|                           | Indoor use   |

| Product Orders      |                                     |
|---------------------|-------------------------------------|
| Product Code        | Description                         |
| ACC-BPF-700-DB-01TH | 700MHz Dual Cavity Filter - Tx High |

**Important:** Specifications are subject to change without prior notice



## 700MHZ DUAL CAVITY FILTER - TX HIGH PICTURES



Picture 1 Wall mount configuration



Picture 2 Rack mount configuration

## 700MHZ DUAL CAVITY FILTER - TX LOW

### Spec Sheet

---



These filters are designed to allow Mimomax RRU-T and BRU-T to coexist in very close proximity to adjacent-band cellular services (such as Verizon and FirstNet), without suffering interference.

The filters are intended to be fitted in each of the antenna feedlines of either the RRU-T or BRU-T as required. Each path through the filter consists of a parallel pair of very sharp filters intended to pass the MiMOMax signals while rejecting the cellular signals on either side.

There are two variants of the filter, one optimised for the use at radio with Tx high locations and one optimised for radio with Tx low locations.

#### Key Features:

- Low Insertion Loss
- High Integration
- High Reliability

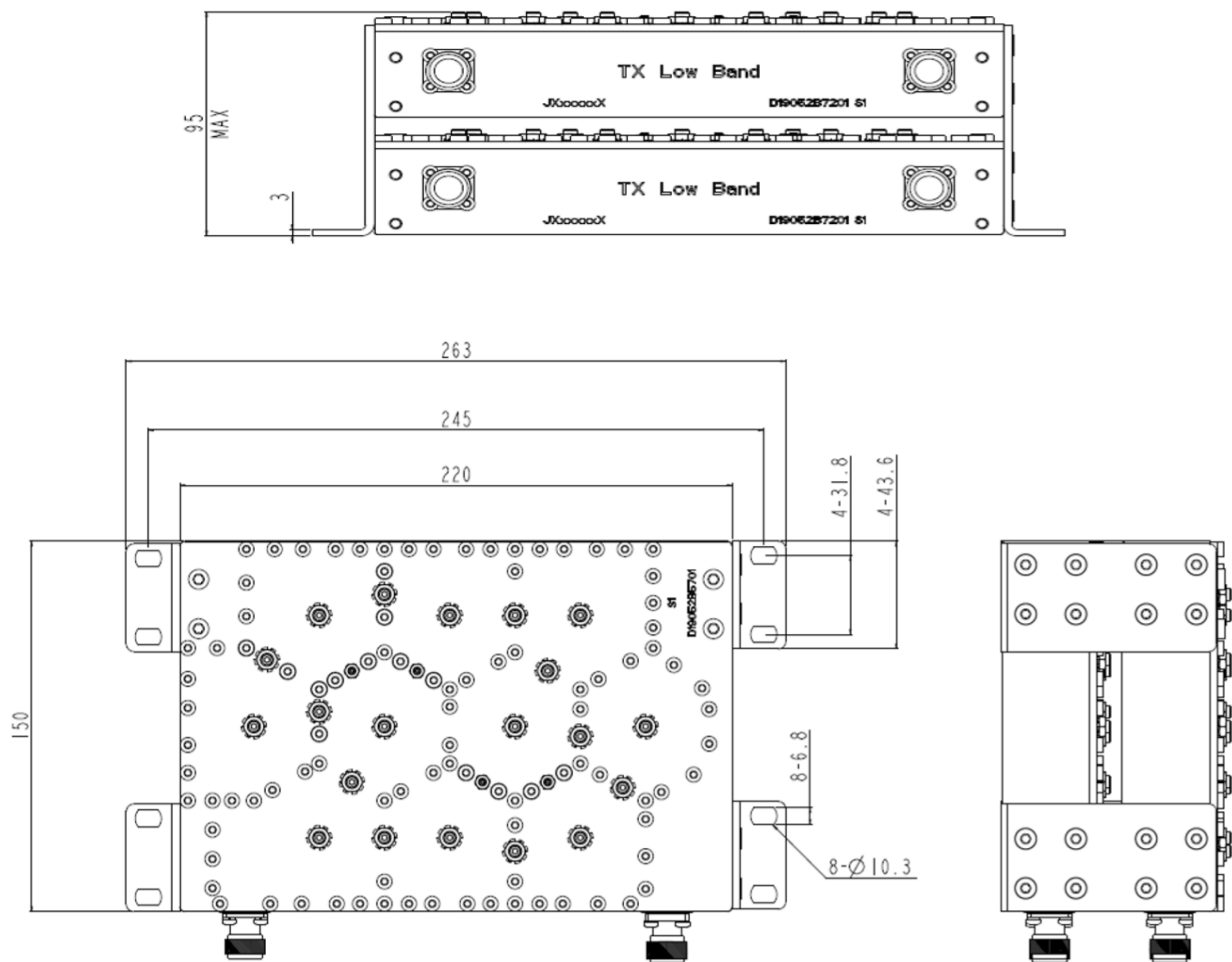


Figure 1 Wall mount configuration

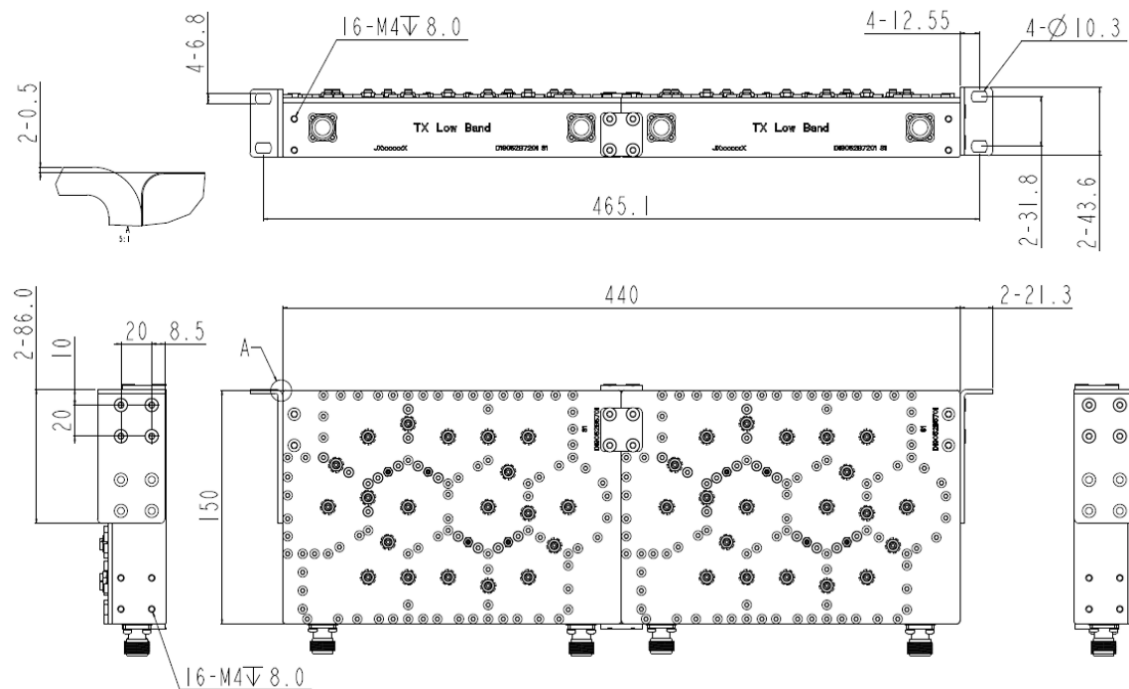


Figure 2 Rack mount configuration



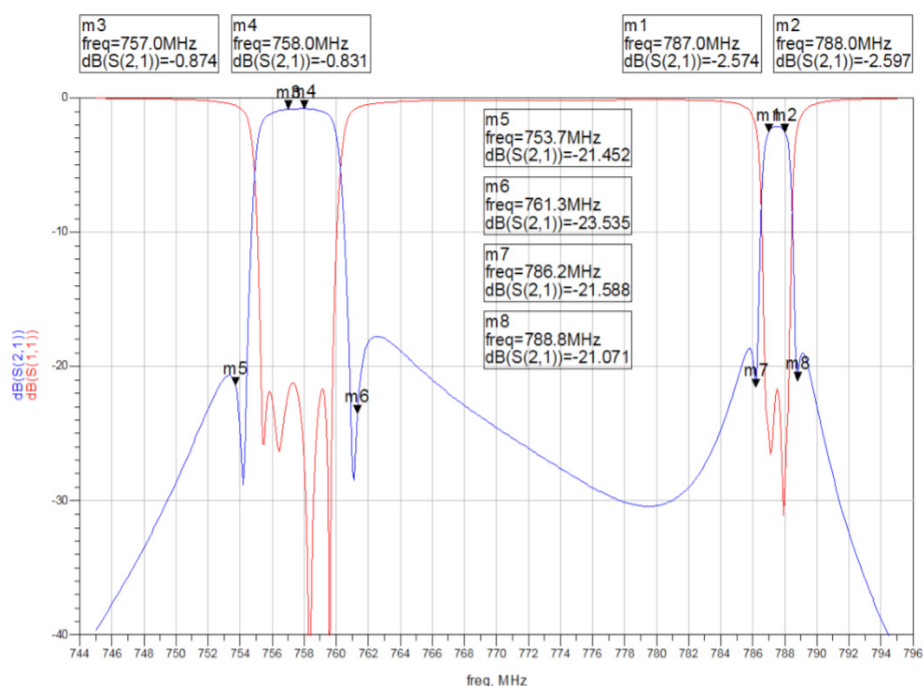
# 700MHZ DUAL CAVITY FILTER - TX LOW SPECIFICATIONS

| Electrical Specifications                   |                                 |                             |
|---|---------------------------------|-----------------------------|
| Parameter                                   | Tx Low                          |                             |
| Frequency Range                             | 757-758 MHz                     | 787-788 MHz                 |
| Return Loss                                 | ≥ 15 dB                         | ≥ 15 dB                     |
| Insertion Loss (+77°F/+25°C)                | ≤ 1.0 dB                        | ≤ 3.0 dB                    |
| Insertion Loss (-4°F/-20°C to +158°F/+70°C) | ≤ 1.1 dB                        | ≤ 4.5 dB                    |
| Rejection                                   | ≥ 15 dB @ 757.5MHz ± 4MHz       | ≥ 15 dB @ 787.5MHz ± 1.5MHz |
| Power Handling                              | 5 Watts (37dBm)                 |                             |
| Temperature Range                           | -4°F to +158°F (-20°C to +70°C) |                             |

| Mechanical Specifications |  |
|---------------------------|--|
| Dimension (L x W x H)     | Rack mount: 440 x 150 x 43.6 mm<br>Wall mount: 263 x 150 x 95 mm |
| Port Connectors           | N-Female   |
| Finish                    | White  |
| Mounting                  | Wall mount and 19" Rack mount                                    |
|                           | Indoor use   |

| Product Orders      |                                    |
|---------------------|------------------------------------|
| Product Code        | Description                        |
| ACC-BPF-700-DB-01TL | 700MHz Dual Cavity Filter - Tx Low |

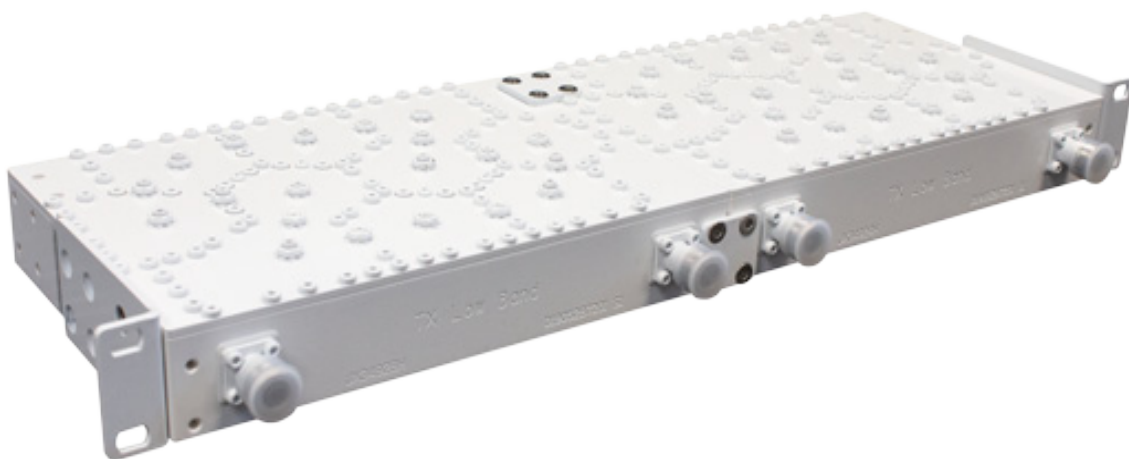
**Important:** Specifications are subject to change without prior notice



## 700MHZ DUAL CAVITY FILTER - TX LOW PICTURES



Picture 1 Wall mount configuration



Picture 2 Rack mount configuration