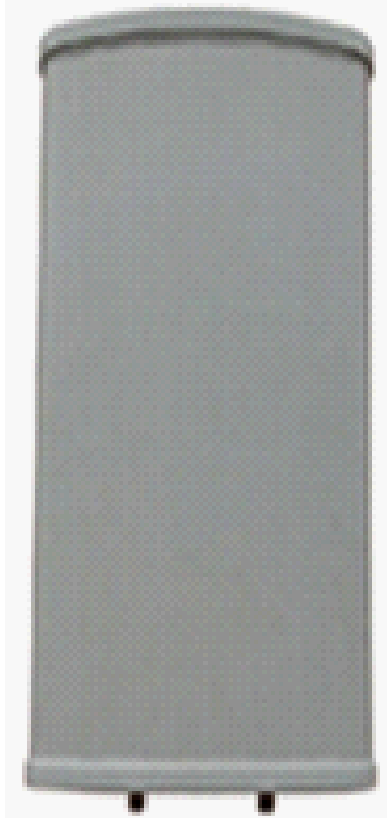


MIMO PANEL ANTENNA - 16dBi

700MHz Antenna Spec Sheet



Mimomax 16dBi MiMO Panel Antenna comes with two connector options, 2 x N-Female and 2 x 4.3-10 Female.

Heav Duty Mounting is also available.



700MHz MIMO PANEL ANTENNA - 16dBi SPECIFICATIONS

Electrical Specifications

Frequency Range	757-788 MHz
Gain	16dBi
VSWR	≤1.5
Polarization	Horizontal + Vertical
F/B Ratio	≥20 dB
Horizontal Beamwidth	70°
Vertical Beamwidth	8°
Input Impedance	50 Ω
Max. Power	100 W
Lightning Protection	DC Ground

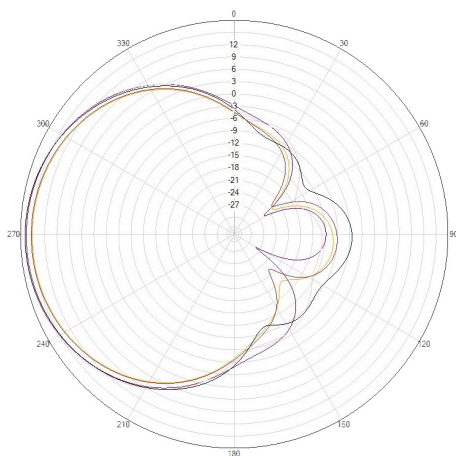
Mechanical Specifications

Connector	2 x 4.3-10 Female / 2 x N-Female
Dimensions	100.8 x 11 x 5.1 inches (2560 x 280 x 130 mm)
Weight	33 lb (15.0 kg)
Reflector Material	Aluminium
Radome Material	UV-PVC
Rated Wind Velocity	130mph (210 km/h)
Operating Temperature	-40°F to 149°F (-40°C to +65°C)
Mounting Pole	Ø33-62mm (heavy duty)

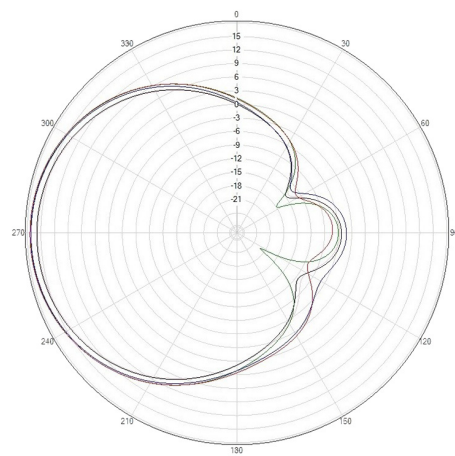
Product Orders

Product Code	Description
ANT-750-800-016-PD0H	700MHz MiMO Panel, 750-800MHz, 16dBi, 2 x N-Female, Heavy Duty Mounting
ANT-750-800-016-PD2H	700MHz MiMO Panel, 750-800MHz, 16dBi, 2x 4.3-10 Female, Heavy Duty Mounting

Important: Specifications are subject to change without prior notice



Horizontal Polarization Azimuth Radiation Pattern



Vertical Polarization Azimuth Radiation Pattern