

Antennas

MISSION CRITICAL WIRELESS COMMUNICATIONS

UBIIX  mimomax

UBIHK  mimomax



Members of our team at our New Zealand headquarters.

WELCOME TO UBIIK MIMOMAX

Our team recognizes what can be achieved when we work closely together with our customers to design, deploy and support solutions for mission critical communications. Collaboration is at the core of what we do best – both internally to bring new developments to the fore and externally with our key customers to ensure our solutions continue to meet their evolving communications needs.

From detailed coverage design through to commissioning and onsite or remote support, we offer our customers a range of services designed to streamline the deployment of our solutions. Whenever our customers need support, there is always a friendly Ubiik Mimomax team member at the end of the phone, willing to help – 24x7x365 days a year. The result of this approach is the creation of effective, durable partnerships with our customers that last well beyond the purchase and shipment of our product.

Our focus on engineering technologically-advanced solutions is only the first part of our customer offering. Our commitment is to make all of your ongoing Ubiik Mimomax interactions positive. We look forward to welcoming you into our Services customer base soon so you too can experience first-hand our service-centric approach.

UHF MIMO CO-LINEAR OMNI DIRECTIONAL - 10dBi



The Ubiik Mimomax Co-Linear Omni Directional Dual Polarized Antenna transmits omni directional (360 degree) signals and has a unique, non-intrusive and vertical physical structure.

As with all Ubiik Mimomax MIMO antennas, the Co-Linear Omni Directional Antenna is cross-polarized. Providing vertical and horizontal transmission in a bi-quadrature format, the design of this antenna increases both resilience to path interference and signal quality.

This antenna has been specifically designed for point-to-multipoint master base station solutions where 360 degree path signals are required to transmit simultaneously to a number of remote outstations.

Specifications	
Frequency Range	400-470MHz
Antenna Gain	10dBi
Connector Type	2 x Male Type N Connector on 1.5m tail of RG213 coaxial cable
Product Code	
ANT-400-420-010-OD10	UHF MiMO Co-Linear, 400-420MHz, 10dBi, 2 x N-Male
ANT-415-435-010-OD10	UHF MiMO Co-Linear, 415-435MHz, 10dBi, 2 x N-Male
ANT-440-460-010-OD10	UHF MiMO Co-Linear, 440-460MHz, 10dBi, 2 x N-Male

UHF MIMO DUAL POLARIZED PANEL - 10dBi

The UbiikMimomax Dual Polarized Panel Antenna is a robust, wideband, flat panel, directional antenna, specifically designed for high-altitude sites that encounter ice, snow and strong wind loading. It provides independent horizontal and vertical polarizations with typically > 35 dB isolation between the polarizations. Hence, can be used for a wide range of radio applications including, MIMO.

With a typical 11.5 dBi antenna gain and maximum input power of 250 W, the Dual Polarized Panel Antenna is a highly versatile base station antenna

Specifications	
Frequency Range	400-440, 420-470MHz
Antenna Gain	10dBi
Connector Type	2 x N-Female 7/16 connectors
Product Code	
ANT-420-470-010-PD40	UHF MiMO Panel, Rugged, 420-470MHz, 10dBi, 2 x 7/16 Female



LOW PROFILE PANNEL ANTENNA - 9dBi

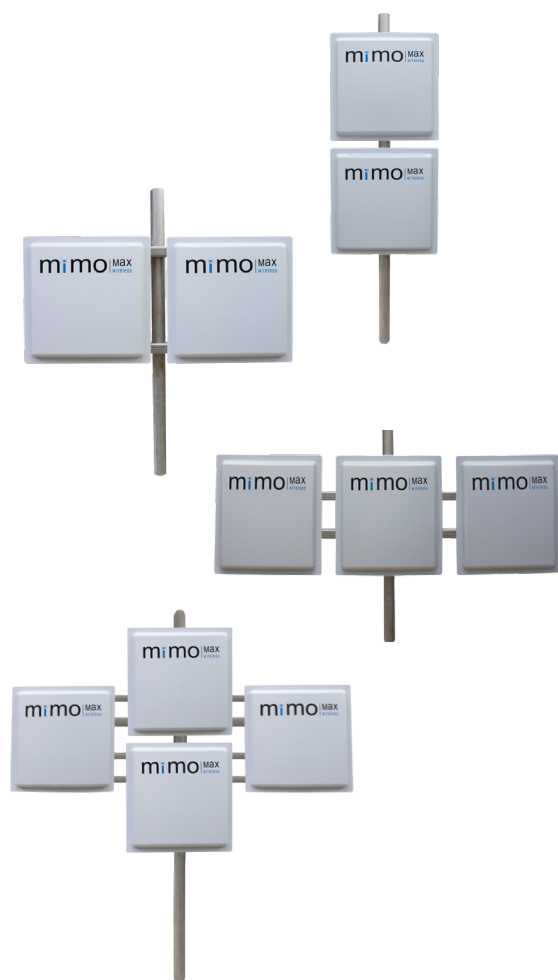
The Ubiik Mimomax Low Profile Panel Antenna is a high-gain, rugged, compact, wide-band antenna suitable for radio sites that encounter ice, snow and strong wind loading.

Equipped with a fully enclosed radome, this antenna is a good fit for harsh weather conditions. With a typical 9dBi antenna gain and a maximum input power of 200W, the Ubiik Mimomax Low Profile Panel Antenna is a highly versatile base station antenna.



Specifications	
Frequency Range	400-420, 415-435, 440-470MHz
Antenna Gain	9dBi
Connector Type	2 x N-Female
Product Code	
ANT-400-420-009-PD00	UHF MiMO Panel, Low Profile, 400-420MHz, 9dBi, 2 x N-Female
ANT-415-435-009-PD00	UHF MiMO Panel, Low Profile, 415-435MHz, 9dBi, 2 x N-Female
ANT-440-470-009-PD00	UHF MiMO Panel, Low Profile, 440-470MHz, 9dBi, 2 x N-Female

LOW PROFILE MIMO PANEL ANTENNA ARRAY - 12dBi / 13.5dBi / 15dBi



The Low Profile MIMO Panel Antenna Array is available in a dual, triple or quad array for 400 MHz, offering a 12.5dBi, 13.5dBi or 15dBi gain respectively. This highly versatile, high-gain antenna has been designed with a fully enclosed radome to suit radio sites which encounter snow, ice and strong winds.

Ideal for long path remote radios and point-to-point links, this antenna has a maximum power output of 200W.

Specifications	
Frequency Range	400-420, 415-435, 440-470MHz
Antenna Gain	12dBi , 13.5dBi, 15dBi
Connector Type	2 x N-Female
Product Code	
ANT-400-420-012-PD01	UHF MIMO Panel 2 x vertically stacked array, 400-420MHz, 12dBi
ANT-415-435-012-PD01	UHF MIMO Panel 2 x vertically stacked array, 415-435MHz, 12dBi
ANT-440-470-012-PD01	UHF MIMO Panel 2 x vertically stacked array, 440-470MHz, 12dBi
ANT-400-420-012-PD02	UHF MIMO Panel 2 x horizontally stacked array, 400-420MHz, 12dBi
ANT-415-435-012-PD02	UHF MIMO Panel 2 x horizontally stacked array, 415-435MHz, 12dBi
ANT-440-470-012-PD02	UHF MIMO Panel 2 x horizontally stacked array, 440-470MHz, 12dBi
ANT-400-420-013-PD03	UHF MIMO Panel 3 x horizontally stacked array, 400-420MHz, 13dBi
ANT-415-435-013-PD03	UHF MIMO Panel 3 x horizontally stacked array, 415-435MHz, 13dBi
ANT-440-470-013-PD03	UHF MIMO Panel 3 x horizontally stacked array, 440-470MHz, 13dBi
ANT-400-420-015-PD04	UHF MIMO Panel 4 x array, 400-420MHz, 15dBi
ANT-415-435-015-PD04	UHF MIMO Panel 4 x array, 415-435MHz, 15dBi
ANT-440-470-015-PD04	UHF MIMO Panel 4 x array, 440-470MHz, 15dBi

DUAL POLARIZED OMNI-DIRECTIONAL ANTENNA - 8dBi



The Ubiik Mimomax MIMO Omni-Directional Dual Polarized Antenna transmits omni directional (360 degree) signals and has a unique, non-intrusive, vertical physical structure. Like all Ubiik Mimomax Antennas, the MIMO Omni-Directional Antenna is cross polarized. It transmits both vertically and horizontally polarized signals in a bi-quadrature diversity format, increasing signal quality and resilience to path interference.

The Ubiik Mimomax MIMO Omni-Directional Dual Polarised Antenna is specifically designed for point-to-multipoint master base station solutions where 360 degree path signals are required to transmit simultaneously to a number of remote outstations.

Specifications	
Frequency Range	698-960 MHz
Antenna Gain	8dBi
Connector Type	2 x N-Female
Product Code	
ANT-690-2K7-003-OS1G	Low Profile LTE High Vibration Omni-Directional Antenna

MIMO PANEL ANTENNA - 16dBi

Primarily intended as a sector antenna for base stations, this high gain (16dBi) antenna offers dual polarization (vertical and horizontal) for better signal quality. The MIMO panel antenna comes with two connector options - 2 x N-Female and 2 x 4.3-10 Female. Suitable for high wind environments and with a Heavy Duty Mounting kit available

Specifications	
Frequency Range	757-788 MHz
Antenna Gain	16dBi
Connector Type	2 x 4.3-10 Female / 2 x N-Female
Product Code	
ANT-750-800-016-PD0H	700MHz MiMO Panel, 750-800MHz, 16dBi, 2 x N-Female, Heavy Duty Mounting
ANT-750-800-016-PD2H	700MHz MiMO Panel, 750-800MHz, 16dBi, 2x 4.3-10 Female, Heavy Duty Mounting



COMPACT PANEL ANTENNA - 11dBi



This compact, directional, wideband antenna from Ubiik Mimomax offers an 11dBi gain and a maximum power of 100W.

The robust housing has been designed to withstand severe weather and heavy wind loading, making it an ideal antenna for harsh environments. Heavy duty mounting is available.

Specifications	
Frequency Range	750-800MHz
Antenna Gain	11dBi
Connector Type	2 x N-Female / 2 x 4.3-10 Female
Product Code	
ANT-750-800-011-PD00	700MHz MiMO Panel, 750-800MHz, 11dBi, 2 x N-Female
ANT-750-800-011-PD0H	700MHz MiMO Panel, 750-800MHz, 11dBi, 2 x N-Female, Heavy Duty Mounting
ANT-750-800-011-PD20	700MHz MiMO Panel, 750-800MHz, 11dBi, 2 x 4.3-10 Female
ANT-750-800-011-PD2H	700MHz MiMO Panel, 750-800MHz, 11dBi, 2 x 4.3-10 Female, Heavy Duty Mounting

COMPACT PANEL ANTENNA - 9dBi



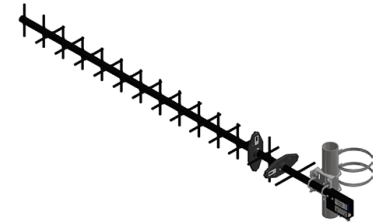
The Ubiik Mimomax Panel Antennas are compact, wide-band, panel, directional antennas, specifically designed for high-altitude sites that encounter ice, snow and strong wind loading. Available in 9dBi antenna gain with maximum input power of 100W, Ubiik Mimomax Panel Antennas are a highly versatile base station antenna. Heavy duty mounting available.

Specifications	
Frequency Range	750-800 MHz
Antenna Gain	9dBi
Connector Type	2 x N-Female / 2 x 4.4-10 Female
Product Code	
ANT-750-800-009-PD00	700MHz MiMO Panel, 750-800MHz, 9dBi, 2 x N-Female
ANT-750-800-009-PD0H	700MHz MiMO Panel, 750-800MHz, 9dBi, 2 x N-Female, Heavy Duty Mounting
ANT-750-800-009-PD20	700MHz MiMO Panel, 750-800MHz, 9dBi, 2 x 4.3-10 Female
ANT-750-800-009-PD2H	700MHz MiMO Panel, 750-800MHz, 9dBi, 2 x 4.3-10 Female, Heavy Duty Mounting

MIMO YAGI ANTENNA - 12dBi

The 700 MHz MiMO Yagi Antenna with Dual Polarization is a high gain, premium quality antenna with excellent port to port isolation. Manufactured using high strength 6061-T6 aluminum, this antenna will withstand heavy ice, high wind and other harsh conditions. The entire antenna is anodized for aesthetic appearance and corrosion resistance.

Specifications	
Frequency Range	757-788 MHz
Antenna Gain	12dBi
Connector Type	2 x N-Female
Product Code	
ANT-757-788-012-YD00	700MHZ MiMO Yagi, 757-788MHz, 12dBi, 2 x N-Female



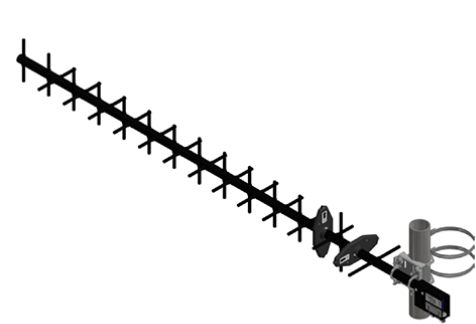
MIMO YAGI ANTENNA WITH RADOME - 12dBi



Offering the same features as the antenna above. This antenna incorporates a radome for protection in severe conditions.

Specifications	
Frequency Range	757-788 MHz
Antenna Gain	12dBi
Connector Type	2 x N-Female
Product Code	
ANT-757-788-012-YD01	700MHZ MiMO Yagi, 757-788MHz, 12dBi, 2 x N-Female, with Radome

MIMO DUAL POLARIZED YAGI ANTENNA - 15dBi



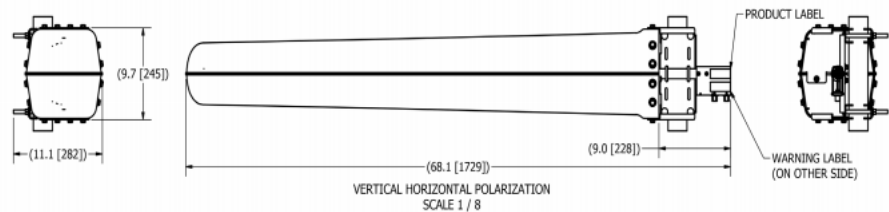
Manufactured using high strength 6061-T6 aluminium, this high gain 700 MHz antenna offers excellent port to port isolation. Vertical and horizontal polarization for increased signal quality and anodized for corrosion resistance.

Specifications	
Frequency Range	757-788 MHz
Antenna Gain	15dBi
Connector Type	
Product Code	
ANT-757-788-015-YD00	700MHz MiMO Yagi, 757-788MHz, 15dBi, 2 x N-Female

MIMO DUAL POLARIZED YAGI ANTENNA WITH RADOME - 15dBi

Offering the same features as the antenna above. This antenna incorporates a radome for protection in harsh environments.

Specifications	
Frequency Range	757-788 MHz
Antenna Gain	15dBi
Connector Type	2 x N-Female
Product Code	
ANT-757-788-015-YD01	700MHz MiMO Yagi, 757-788MHz, 15dBi, 2 x Type N-Female, with Radome



LOW PROFILE PANEL ANTENNA - 12dBi



With a rugged, compact design and a fully enclosed radome, the Low Profile Panel Antenna is the ideal choice for severe weather environments experiencing ice and strong winds. This highly versatile antenna offers a typical gain of 12dBi and a maximum input power of 200W.

Specifications	
Frequency Range	757-788 MHz
Antenna Gain	12dBi
Connector Type	2 x N-Female
Product Code	
ANT-757-788-012-PD-00	700MHz MiMO Panel, Low Profile, 757-788MHz, 12dBi, 2 x N-Female

DUAL POLARIZED MIMO DIRECTIONAL PANEL ANTENNA - 9dBi



The Dual-Polarized 700MHz MIMO Directional Panel Antenna offers 700 MHz upper A block wide-band coverage, high gain, and a rugged housing design, with a heavy-duty mounting bracket for mast or wall mount installations. It is ideal for wireless Field Area Networks (FAN), which extend smart grid connectivity deep into distribution networks, enabling new functionality such as advanced metering, distribution automation, substation automation, and distributed generation.

Specifications	
Frequency Range	757-788 MHz
Antenna Gain	9dBi
Connector Type	2 x N-Female
Product Code	
ANT-757-788-009-PD00	700MHz MiMO Panel, 757-788MHz, 9dBi, 2 x N-Female

DUAL POLARIZED COMPACT PANEL ANTENNA - 8dBi

This highly versatile, 700 MHz base station antenna incorporates a fully enclosed radome for protection against harsh weather. The rugged yet compact design makes it suitable for sites which encounter snow, ice and powerful winds.

This antenna offers a typical gain of 8dBi and a maximum power of 50W.

Specifications	
Frequency Range	757-788 MHz
Antenna Gain	8dBi
Connector Type	500mm Pigtail 2 x N-Female
Product Code	
ANT-757-788-008-PD00	700MHz MiMO Panel, 757-788MHz, 8dBi, 2xN-Female
ANT-757-788-008-PD0H	700MHz MiMO Panel, 757-788MHz, 8dBi, 2xN-Female, Heavy Duty Mounting



OMNI-DIRECTIONAL GROUND PLANE ANTENNA - 4dBi



The Ubiik Mimomax Omni-Directional Ground Plane Antenna is a vertically polarized, wideband antenna which offers omni-directional (360 degree) transmission.

This antenna also covers 2G bands and has an optional wall or pole mount kit available.

Specifications	
Frequency Range	690-960 MHz / 1710-2700 MHz
Antenna Gain	4dBi
Connector Type	1 x N-Female
Product Code	
ANT-698-2K7-004-OS0G	700MHz Co-Linear, 698-2K7MHz, Ground Plane, 4dBi, 1 x N-Female

4G LTE NO GROUND PLANE OMNI-DIRECTIONAL ANTENNA - 2dBi



The 4G LTE No Ground Plane Omni-Directional Antenna provides superior pattern coverage for mobile and fixed applications operating in 4G LTE frequencies without the need for a ground plane. Designed to provide industry leading wideband performance and reliability, with minimum loss and no tuning required. This antenna is environmentally tested for both indoor or outdoor applications.

Specifications	
Frequency Range	690-960 MHz / 1710-2700 MHz
Antenna Gain	2dBi
Connector Type	1 x N-Female

Product Code	
ANT-690-2K7-002-OS1N	4G LTE No Ground Plane Omni-Directional Antenna

LOW PROFILE LTE HIGH VIBRATION OMNI-DIRECTIONAL ANTENNA - 3dBi

The Low Profile LTE High Vibration Omni-Directional Antenna provides superior multi-band pattern coverage for mobile or fixed applications operating in frequencies from 690 MHz to 2700 MHz. This antenna is designed to provide industry-leading wideband performance and optimal coverage of LTE frequencies, with minimum loss and no tuning required. Featuring an attractive, compact housing, this antenna is designed and environmentally tested to withstand severe vibration conditions, making it suitable for rail, mining, and construction applications. The antenna comes with a factory-installed vandal proof mount that provides N female termination.



Specifications	
Frequency Range	690-2700 MHz
Antenna Gain	3dBi
Connector Type	1 x N-Female

Product Code	
ANT-690-2K7-003-OS1G	Low Profile LTE High Vibration Omni-Directional Antenna

MIMO PANEL ANTENNA - 12dBi



This compact, wideband antenna from Ubiik Mimomax offers a 12dBi gain and has been designed to cope with severe weather conditions due to the robust housing. Heavy duty mounting options and resistance to strong winds also makes this an ideal fit for harsh environments.

Specifications	
Frequency Range	806-960 MHz
Antenna Gain	12.5dBi
Connector Type	2 x N-Female / 2 x 4.3-10 Female
Product Code	
ANT-806-960-012-PD00	900MHz MiMO Panel, 806-960MHz, 12dBi, 2 x N-Female
ANT-806-960-012-PD0H	900 MiMO Panel, 806-960MHz, 12dBi. 2 x N-Female, with heavy duty mounting
ANT-806-960-012-PD0H	900MHz MiMO Panel, 806-960MHz, 12dBi, 2 x 4.3-10 Female
ANT-806-960-012-PD0H	900 MiMO Panel, 806-960MHz, 12dBi. 2 x 4.3-10 Female, with heavy duty mounting

MIMO PANEL ANTENNA - 16dBi

High gain, with vertical and horizontal polarization for better signal quality, this MIMO Panel Antenna offers a typical gain of 16dBi. The rugged housing design provides excellent protection against ice, snow and strong winds.

Specifications	
Frequency Range	806-960 MHz
Antenna Gain	16dBi
Connector Type	2 x N-Female
Product Code	
ANT-806-869-016-PD00	900MHz MiMO Panel, 806-869MHz, 16dBi, 2 x N-Female
ANT-896-960-016-PD00	900MHz MiMO Panel, 896-960MHz, 16dBi, 2 x N-Female



MIMO PANEL ANTENNA - 10dBi



Ideal for icy conditions and high wind areas, this compact, rugged antenna has a fully enclosed radome. Offering independent horizontal and vertical polarizations, the high gain, wideband MIMO Panel Antenna is suitable for a wide range of radio applications, including MIMO.

Specifications	
Frequency Range	806-960 MHz
Antenna Gain	10dBi
Connector Type	2 x N-Female / 2 x 4.3-10 Female
Product Code	
ANT-806-960-010-PD00	900MHz MiMO Panel, 806-960MHz, 10dBi, 2 x N-Female
ANT-806-960-010-PD0H	900 MiMO Panel, 806-960MHz, 10dBi. 2 x N-Female, with heavy duty mounting
ANT-806-960-010-PD20	900MHz MiMO Panel, 806-960MHz, 10dBi, 2 x 4.3-10 Female
ANT-806-960-010-PD2H	900 MiMO Panel, 806-960MHz, 10dBi. 2 x 4.3-10 Female, with heavy duty mounting

Contact Us Today

US Office

4630 East Elwood St, Suite 4
Phoenix, AZ 85040

Phone: +1-832-387-3349

Email: sales@ubiikmimomax.com
ubiikmimomax.com

